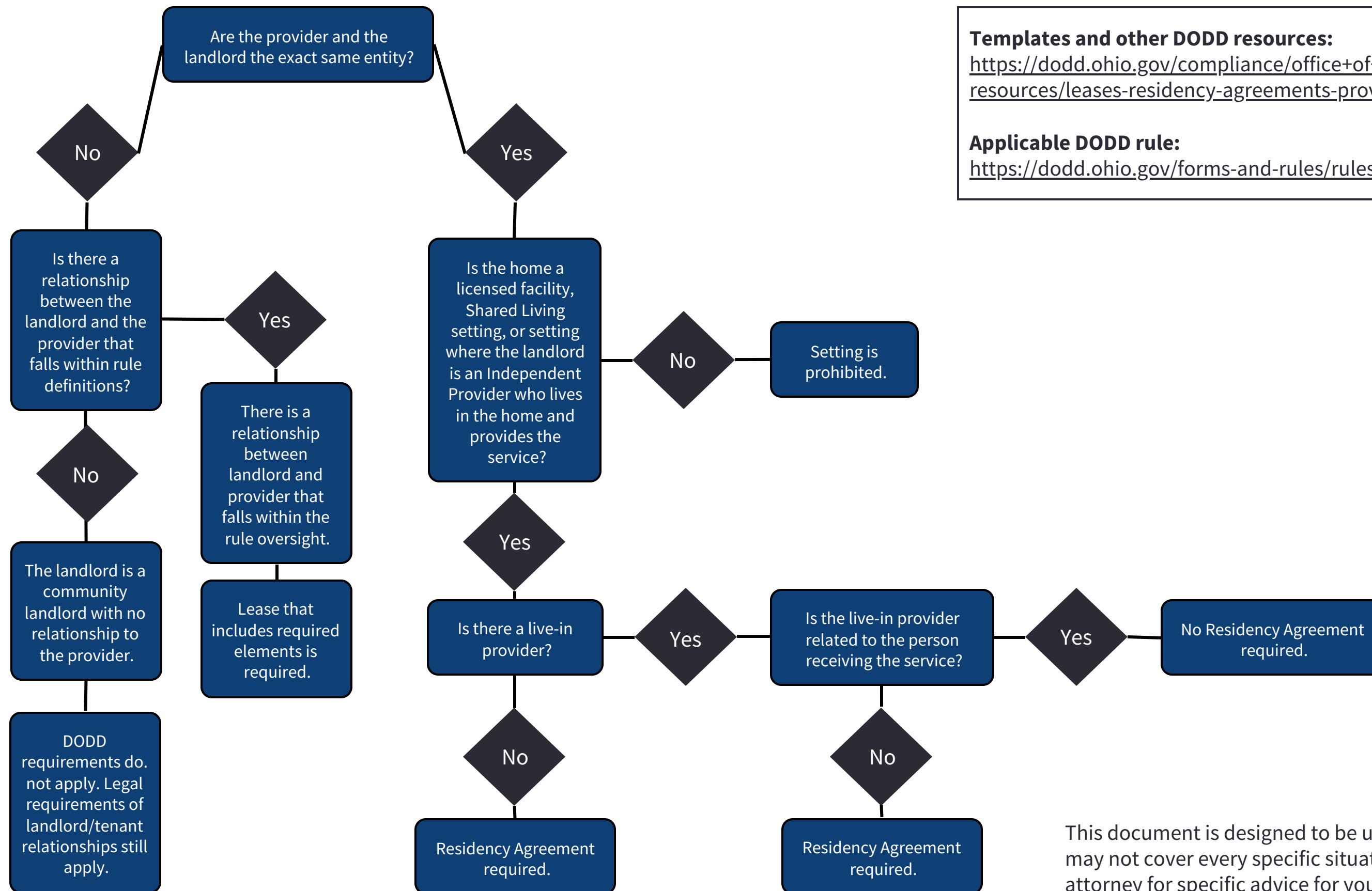


Provider Owned-Controlled Decision Tree



Department of
Developmental
Disabilities



Templates and other DODD resources:

<https://dodd.ohio.gov/compliance/office+of+compliance/compliance-resources/leases-residency-agreements-provider-controlled-settings>

Applicable DODD rule:

<https://dodd.ohio.gov/forms-and-rules/rules-in-effect/5123-9-02>

This document is designed to be used as a general guide and may not cover every specific situation. Consult with an attorney for specific advice for your situation.