



January 20, 2021

Dear Valued 3M Customer,

Recently, we have been receiving increasing reports of fraud related to the following three 3M respirator models:

- 3M™ Health Care Particulate Respirator and Surgical Mask 1860;
- 3M™ Health Care Particulate Respirator and Surgical Mask 1860S; and
- 3M™ Aura™ Health Care Particulate Respirator and Surgical Mask 1870+.



These have included reports of fake/counterfeit product as well as fraudulent offers where product is offered but not delivered. We have been working with law enforcement and other appropriate authorities to eliminate this fraud but wanted to highlight this concerning trend.

Over the past several months, 3M's enforcement actions have resulted in the seizure of substantial quantities of counterfeit model 1860, 1860S, and 1870+ surgical respirators which had been sold or offered to government agencies in at least six different states.

With regard to model 1860, 1860S, and 1870+ surgical respirators, we have identified counterfeit product bearing the following Lot Codes:

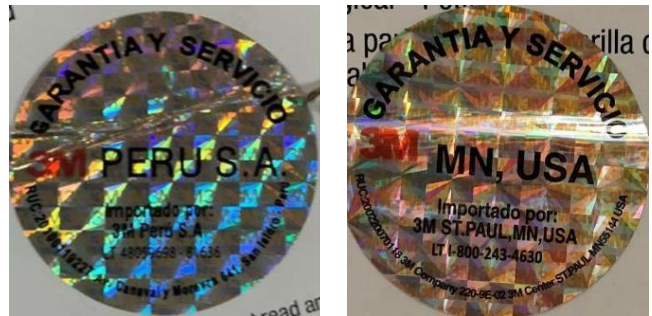
	Lot Codes
Model 1860	B19029, B19206, B19240, B19130, B19133, B19155, B19161, B19206, B19314, B20010, B20013, B20016, B20018, B20020, B20021, B20022, B20025, B20060, B20119, B20245, R20025, R20102, R20144, R20150, R20294
Model 1860S	B20522, B20659, B20670, R20522
Model 1870+	C193041, C190241



If you possess respirators bearing one of these Lot Codes, please immediately assess the way in which you acquired those products. If you purchased them from a third party that is not a 3M authorized distributor, then there is a significant risk that they are counterfeit and should

not be used. Please contact our anti-fraud hotline (phone number and website address below) with any questions or concerns.

An additional indicator of potential counterfeit product is the appearance of a “Peru Seal” or other similar seals (examples at right). 3M does not use a “Peru Seal” outside of Latin America and does not use other similar seals. Product bearing these seals has a significant risk of being counterfeit and so should be thoroughly vetted prior to use.



Please also note:

- All 3M model 1860, 1860S, and 1870+ respirators exported from China should be viewed as counterfeit. We do not manufacture these respirators in China.
- All shipments of 3M model 1860, 1860S, and 1870+ respirators accompanied by a TUV or SGS certification report should be viewed as highly suspicious and most likely counterfeit.

In light of these developments, please be aware of – and on guard against – the increased risk of fraud and counterfeit related to model 1860, 1860S, and 1870+ respirators, particularly in connection with transactions involving third parties that are not 3M authorized distributors. We strongly recommend that 3M respirators be purchased only through 3M authorized distributors, or through existing contracting vehicles (i.e., Federal Supply Schedules), as this will provide the greatest assurance of receiving authentic product. As part of our ongoing support for critical frontline workers during the COVID-19 pandemic, our supply of model 1860, 1860S, and 1870+ surgical respirators is currently intended for healthcare end-users.

If you are looking to purchase, or are considering offers to sell, model 1860, 1860S, or 1870+ surgical respirators or other 3M respiratory protection products from third parties, please contact our anti-fraud hotline at 1-800-426-8688 to verify if the offer is from a 3M authorized distributor. We also strongly encourage you to contact our anti-fraud hotline if you have purchased one of these products from an unfamiliar third party and would like assistance authenticating the product you have received. You can also find more information on our website at [3M.com/covidfraud](https://www.3m.com/covidfraud).

Our anti-fraud team has thus far investigated more than 10,500 reports globally of suspected fraud, counterfeiting and price gouging. We look forward to working with you to assess the situation and help you reduce the risk of being defrauded.

Thank you for your continued support.